

**Kam Valley is well equipped to handle your product design prototyping and manufacturing needs.**

## 7 Axis DMG Mori CTX Beta 1250 Mill Turn Machine



- + Twin spindle simultaneous 5-Axis milling and turning
- + 6 sided complete machining through sub spindle transfer
- + 19 inch max turning diameter with 4 inch through capacity
- + Automatic bar feed capacity up to 4 inch diameter
- + 12000 RPM, Capto C6, turning-milling spindle
- + 12 inch main, 10 inch sub
- + 48 tool changer

**7-Axis technology provides near infinite design possibilities and dramatic efficiency gains.**

## 5 Axis DMG Mori DMU 50 with Pallet Robot



- + Erowa quick change zero point fixture system
- + 10 station pallet loading robot
- + 18000 RPM milling spindle
- + 17.7 inch x 19.5 inch travels
- + -5° to +110° A-Axis Swivel, continuous C-Axis
- + 60 tool changer
- + In process measuring

**Robust milling technologies with quick change fixturing  
for your low to medium production needs**

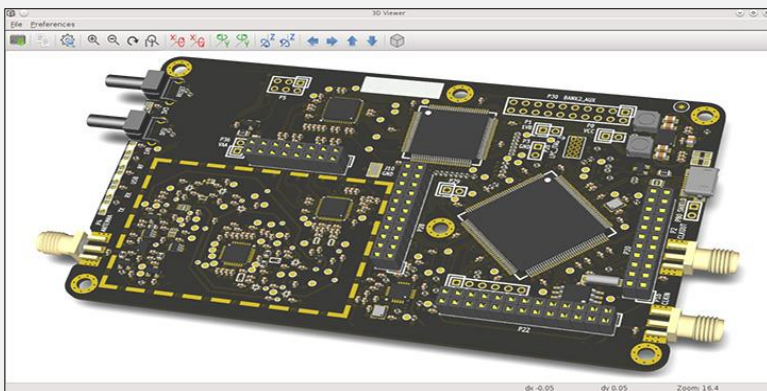
### 3 Axis Milltronics RW 20 Vertical Machining Center



- ✚ 3-Axis vertical machining center
- ✚ Quick change fixture plate system
- ✚ 25 inch x 20 inch travels
- ✚ 12000 RPM spindle
- ✚ 16 tool changer

**Complete electronics integration and PCB design services  
help you put the brains into your black box**

### Electronics Circuit Board Design and Integration

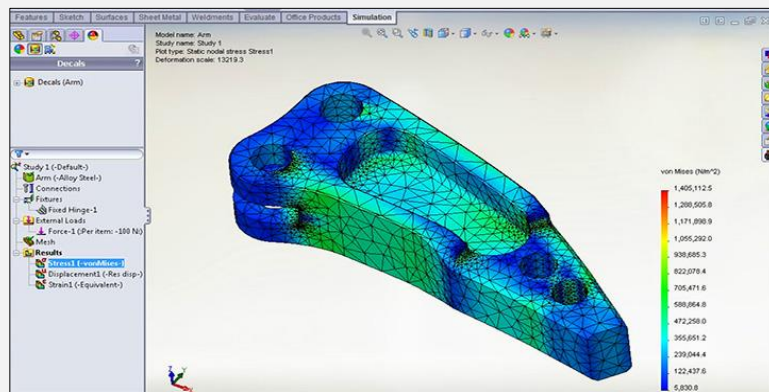


- ✚ Embedded prototyping and design services
- ✚ Electronic circuit board design and routing
- ✚ Microcontroller and FPGA programming
- ✚ Hardware interfacing and integration
- ✚ PC programming and interfacing

**Complete product design and manufacturing under one roof.**

**Our award winning design team uses industry standard CAD and CAM software to validate your designs.**

## 3D Modeling, Validation, and CNC Programming



- ✚ SolidWorks Premium multi licence
- ✚ Certified SolidWorks Professional Certification
- ✚ Extensive proven experience with modeling, surfacing, and mold tools
- ✚ GibbsCam CNC Programming Suite
- ✚ 5 Axis simultaneous milling and mill turn programming

**High quality anodizing and laser engraving services to give your products that market ready appearance.**

## Anodizing, Engraving, and Branding Services



- ✚ Type II anodizing of aluminum
- ✚ 24 inch length tank capacity
- ✚ Vibratory deburring machines
- ✚ 30 watt laser engraving system
- ✚ Glass and tile etching capability
- ✚ Logo design services

**From prototype to production, we can help get you there.**

**Please visit our website for a quote today.**

**[www.KamValley.com](http://www.KamValley.com)**